



THE SPEEDSTER™

MOTOR SPEED CONTROLLER

Instructions

1. Before using The Speedster™, please read the instruction manual that came with your fan, blower, drill, router, pump, etc. to familiarize yourself with it's operation and confirm that it has a Universal brush type motor or a motor that is compatible with a Speed Controller. The Speedster™ is not for use with aquarium or pond pumps that have their impellers driven by a rotor with a permanent magnet attached to it.
2. Make sure that The Speedster™ is in good condition without cuts and abrasions in the power cords or alterations to the controller. If an extension cord is to be used it must be done in this way only. Plug the extension cord into a properly grounded 120-volt outlet first, then plug The Speedster™ (with it's switch in the OFF position) into the extension cord and then plug the power equipment or tool into The Speedster's™ outlet. Any length of grounded extension cord used with The Speedster™ must have a suitable gauge of wire to handle the electrical amp draw of the motorized equipment. The Speedster™ is rated for a maximum power draw of 15 amperes only.
3. Verify that The Speedster's™ three-way switch is in the OFF position and the variable speed control knob is turned to the full clockwise position. Plug the tool or equipment's electrical cord into The Speedster's outlet.
4. Plug The Speedster's™ electrical cord into a properly grounded 120-volt AC outlet. With children, hands, feet, animals, clothing, etc. moved safely away from the tool or equipment, press the three-way switch to FULL speed mode and check for proper motor operation. If satisfactory, then check the motors ability to run at variable speeds by pressing the three-way switch to VAR (VARIABLE) position and turn the knob counterclockwise to reduce the motor's speed. If satisfactory, while the motor is at a reduced speed, check to make sure the motor will start in variable speed mode by pressing the three-way switch to OFF. Allow the motor to come to a full stop. After the motor comes to a complete stop, press the switch back to VAR (VARIABLE) position. The motor should start and run smoothly in variable speed mode. Discontinue the use of The Speedster™ if the motor will not start, run smoothly or overheats in variable speed mode as it is an indicator that the motor may be defective, worn out, or simply not compatible with The Speedster™.
5. Be Safe. Any length of grounded extension cord used with The Speedster™ must have a large enough gauge wire to handle the electrical amp draw of the motorized equipment.

Safety Warnings and Precautions

1. Observe Work Area Conditions: Do not operate The Speedster™ in wet or damp locations. It is not waterproof or water-resistant. Do not expose The Speedster™ to rain or snow. Periodically check the electrical cords connected to The Speedster™ for signs of overheating. To do so, turn The Speedster™ OFF and unplug it from its outlet. Then check all electrical connections for corrosion (especially in areas of high humidity) and wire cords for damage. The Speedster™ is rated for a maximum power draw of 15 amperes only. If an extension cord is to be used it must be done in this way only. Plug the extension cord into a properly grounded 120-volt outlet first, then plug The Speedster™ (with it's switch in the OFF position) into the extension cord and then plug the power equipment or tool into The Speedster's™ outlet. Any length of grounded extension cord used with The Speedster™ must have a suitable gauge of wire to handle the electrical amp draw of the motorized equipment.
2. Keep children away from work areas.
3. Store The Speedster™ in a clean and dry location away from insects and pests.

Maintenance

1. To clean The Speedster™, make sure it is unplugged and detached from equipment. Wipe it off with a clean damp cloth. Never use chemicals or solvents. Periodically check the electrical cord connected to The Speedster™ for signs of overheating. Turn The Speedster™ OFF and unplug it from its outlet. Then check all electrical connections for corrosion (especially in areas of high humidity) and wire cords for damage. Corrosion and or cord damage may lead to an electrical fire. If the fuse blows, your equipment may be using more current than The Speedster™ can deliver. Replace the fuse with a 15-amp fuse. Check for faulty tool or equipment operation.
2. Store The Speedster™ in a clean and dry location away from insects and pests.

Warranty

Replacement or Repair Warranty: 90 days for defective parts and materials from date of purchase. Factory requires proof of purchase. Warranty does not cover abuse. Liability is limited to the replacement of The Speedster™.

Specifications

120 volt, 15-amp max. For use with grounded outlets and grounded extension cords only.

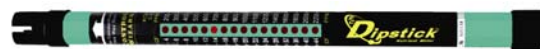
Indoor Climate Controller™

The Indoor Climate Controller is a great tool for the indoor gardener to control temperature and humidity. It can turn CO₂ OFF when exhaust fans are operating or when it is night. High quality temperature and humidity switches are used. 1-year warranty on electrical and lifetime warranty on service.

Item # AA105 MSRP \$169.95



EC Dipstick™



EC Dipstick has proven to be a rugged performer and great conductivity meter. The meter is waterproof to 1 meter for short periods of time. It does not require calibration like other meters. It measures conductivity in the 4 international scales, EC, CF, 700:1 PPM and 500:1 PPM.

Item # CW510 MSRP \$79.95

SEE OTHER SIDE

Heavy Duty Timer™

120-volt dual outlet timer with ON/OFF switch. The outlets will give power to equipment when the ON/OFF switch is disengaged or in the OFF position. It has 96 ON/OFF settings with an AM/PM dial. Simply push down a tripper for 15 minutes of ON time. Maximum total draw is 1500 watts. Made for metal halide/HPS lighting and hydroponic pumps and blowers. The easiest timer I have ever used!



Item # T1100 MSRP \$24.95

The DigiStick™



DigiStick employs the latest Auto-lock™ electronic circuitry to provide a clear and concise reading time after time. The DigiStick also has a large illuminated digital display that is for great using in low light areas. Three conveniently located buttons allows you to choose from the three most popular scales that represent plant food strength: PPM, EC and CF.

Item # CW512 MSRP \$99.95

Accurate pH 3™

Control Wizard Products waterproof



pH meter is the Accurate pH 3. It uses pH 7 buffer solution for its calibration procedure and features a one-point calibration technique for fast and accurate tests.

Item # CW503 MSRP \$71.95

The Levitator™

The Levitator incorporates one set of two adjustable hangers. A hanger is attached to each end of a lamp



reflector. When installed, you will be able to grasp the reflector and pull it down or lift it up to your desired position.

Item # CW600 MSRP \$24.95

CO₂ Monitor™ and CO₂ Controller™

These two units work together to give outstanding results and value. This combo has been designed to turn CO₂ equipment ON and OFF at preset levels by reading the Monitor's signal output. This saves CO₂ from being vented while the area is being cooled.

Each may be purchased separately.

Item # CO352 MSRP \$538.95



CO₂ Injection System™

Includes regulator, flow meter, solenoid, pressure gauge, plastic dispensing tube, instructions and timer. This unit is designed to run continuously during daylight (lights on) periods to provide plants with the needed CO₂ for rapid, healthy plant growth.



EL500™

Simply plug your exhaust fan or small air conditioner into the thermostat and set the dial to the temperature you want. The super high quality exposed coil thermostat is found on equipment costing much, much more. With a U.L. Listing it's a super value!

Item # EL500 MSRP \$49.95



Indoor Weatherman

Control Wizard's Indoor Weatherman is a great little climate reporter. Temperature and humidity are viewed with a large easy to read LCD display. The minimum and maximum temperature and humidity are recorded in the unit's microchip and a simple reset button is supplied for both.

Come back the growing area at the end of the time period you're testing and press the MIN/MAX button for your results. Easy and accurate is a great way to describe this little tool. Uses AA battery.

Item # CW610 MSRP \$22.95

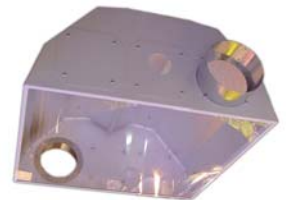
Control Wizard Products Ballasts

Control Wizard Products' ballasts are noted for their superior design, highest quality transformers and capacitors that are outstanding.



Convertible Reflector™

Control Wizard Product's Convertible Reflector™ will not burn out light movers like heavy steel reflectors do. Lightweight, high quality painted aluminum is used to help insure that all brands and models of light movers will give years of faithful service. Interchangeable end plates allow for multi-functional operation.



SEE OTHER SIDE